

ACCESSORY SETUP INSTRUCTION

HEATED DRIVER SEAT ASSY-- PN 5HY0-805100-1000

VALID FOR: MY2019 and Newer UFORCE 1000 UTVs


BEFORE YOU BEGIN: Read and understand the instructions before starting any work. Make sure that all parts are ready and that you have all the tools required for assembly.

NOTE: CFMOTO shall not be liable for any damage caused by incorrect assembly. CFMOTO recommends that all original accessories be assembled by an authorized CFMOTO dealer.

Before assembly, park the vehicle on a flat surface, put the transmission gear into Park (P) and turn off the key switch.

Zhejiang CFMOTO Power Co., Ltd. All rights reserved. Reproduction of this document, even in part, as well as copying of all kinds, is permitted only with the express written permission of the copyright owner.

MEANING OF SYMBOLS

 - Indicates information with more details or tips.

 - Indicates information of warning or danger.

PARTS LIST:

ITEM	PART NAME	PART NUMBER	QTY.	REMARK
1	HEATED DRIVER SEAT ASSY	5HY0-805100-1000	1	The image below is not the final product.
2	HEATED DRIVER SEAT	5HY0-131200-20000	1	
3	BRACKET, HEATING SWITCH	5HY0-130001	1	
4	SEAT HEATING SWITCH	5HY0-136000	1	
5	SELF-TAPPING SCREW ST4.8×13	30110-480130010	3	
6	TIE BAND	8010-150003	1	



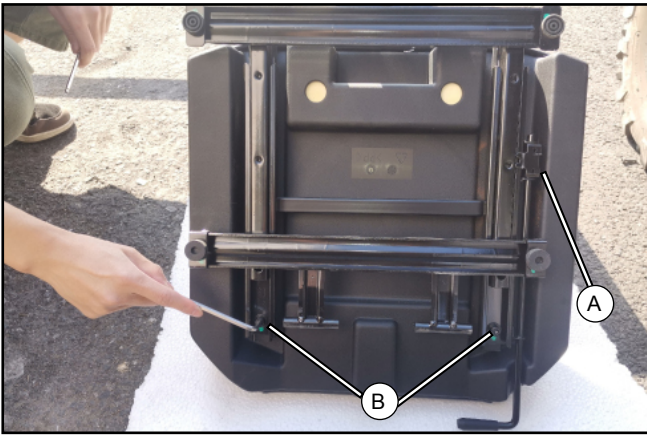
TOOL LIST:

ITEM	DESCRIPTION	QTY.	REMARK
1	13mm ALLEN WRENCH	1	Recommended tools
2	PROTECTIVE GLOVES	1	
3	CUTTER	1	

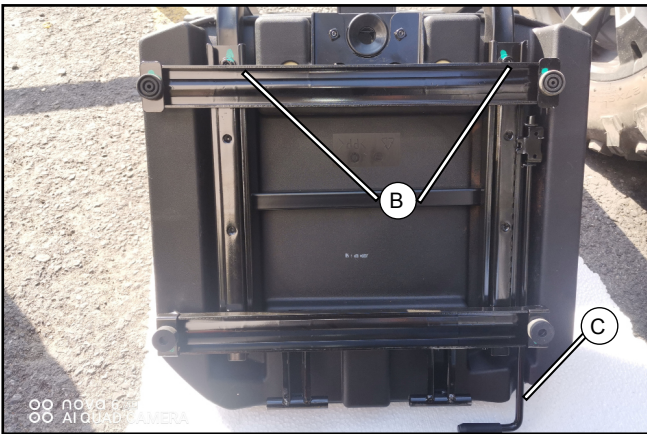
ASSEMBLY and INSTALLATION



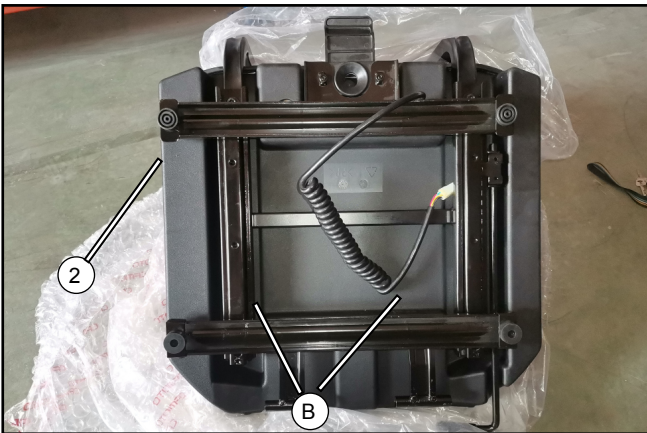
// Remove the driver seat assy (A).



// Place the driver seat assy (A) on a protected stable work surface and remove the bolts (B) shown.



// Turn the handle (C) to adjust the seat base position, creating access for removal of the remaining upper bolts (B).

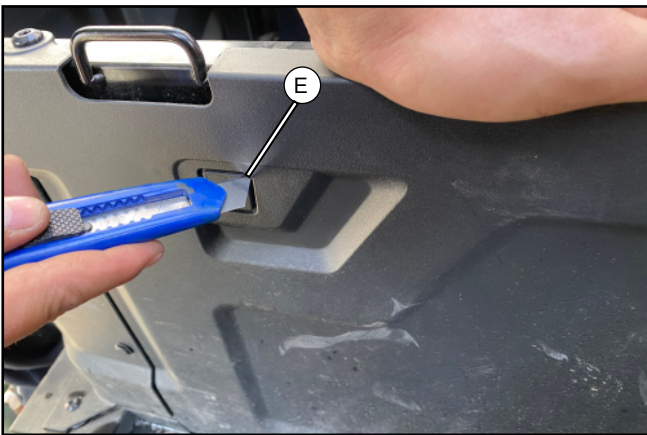


// Position the heated driver seat (2) in the assembly position. Install the removed bolts (B) to secure it, using caution not to over-tighten them.

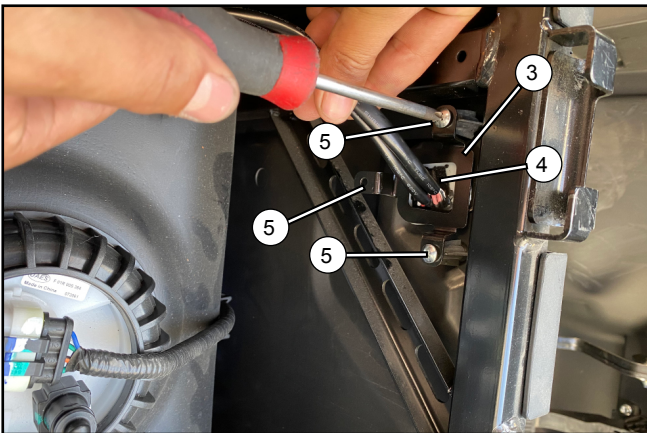
ASSEMBLY and INSTALLATION



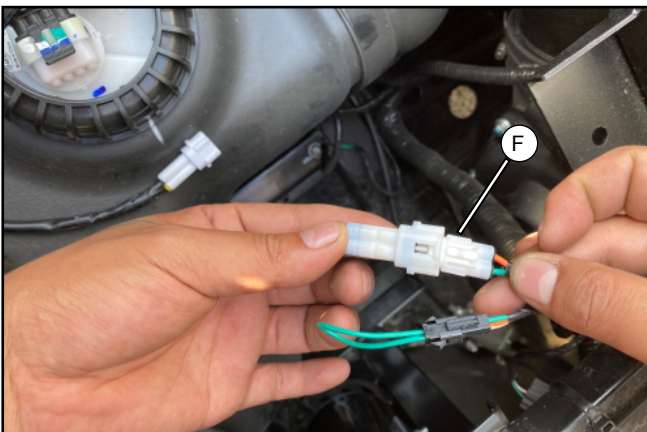
// Remove the seat left lower guard (D)



// At the front of the lower deco panel, use a cutting tool to remove the cut-out (E) as shown under the seat. Use extreme caution to prevent damage to the surrounding plastic.

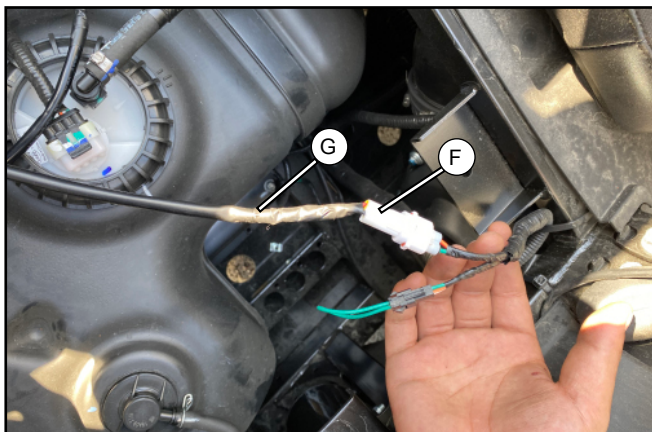


// Place the seat heating switch (4) into the opening made under the seat, then secure it with the heating switch bracket (3) and self-tapping screws (5).

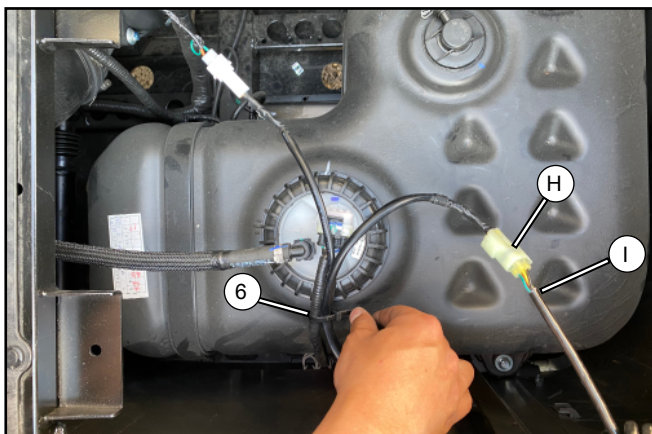


// In the vehicle, locate and remove the white plug from reserved port (F) as shown.

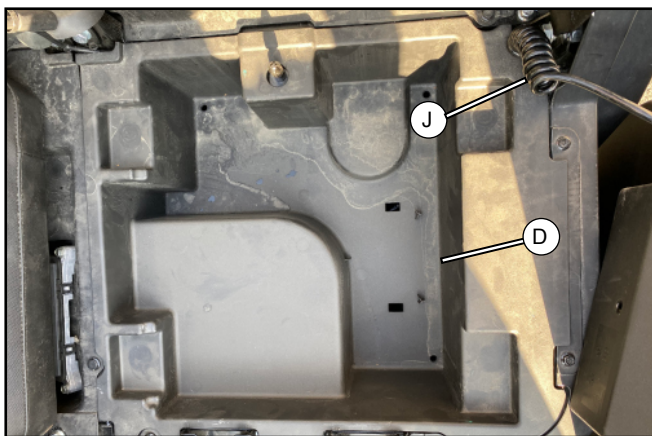
ASSEMBLY and INSTALLATION



// Connect port (F) to port (G) of the seat heating switch.



// Connect the seat switch port (H) to the seat heating port (I), and secure them with tie band (6) as shown.



// Position the heated driver seat cable (J) as shown in the image and install the seat left lower guard (D).



// Install the heated driver seat and ensure it is latched.